

# Japan

2010

Total population (thousands) .....	127 353
Population density (persons per square km) .....	337
Percentage of population under age 15 .....	13.3
Percentage of population age 15-24 .....	10.1
Percentage of population age 15-64 .....	63.8
Percentage of population aged 65+ .....	23.0

2005-2010

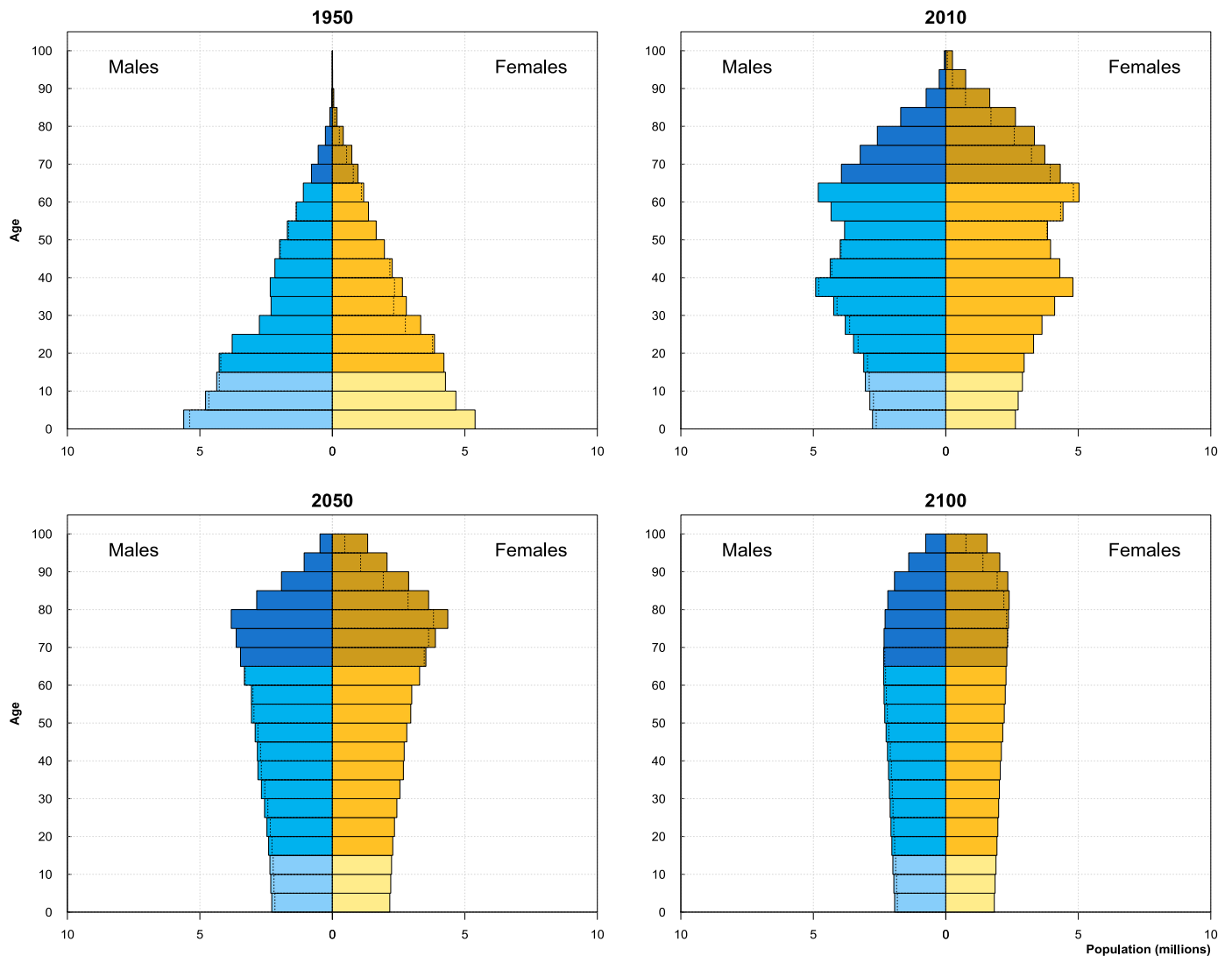
Annual rate of population change (percentage) .....	0.1
Total fertility (children per woman) .....	1.34
Under-five mortality (5q0) per 1,000 live births .....	4
Life expectancy at birth (years) .....	82.7

Note: data presented for the projection period 2010-2100 refer to the medium fertility variant.



Map Sources: UNCS, ESRI.  
The boundaries and names shown and the designations used on this map do not imply official endorsement or acceptance by the United Nations. Map created in Aug 2013.

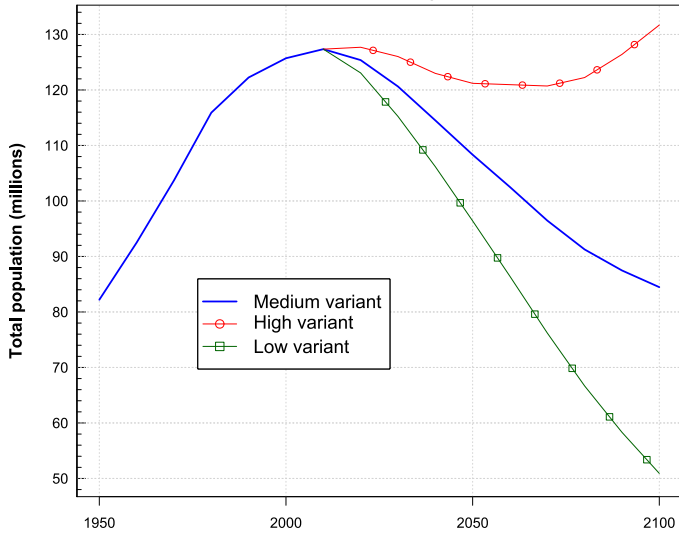
## Population by age groups and sex (absolute numbers)



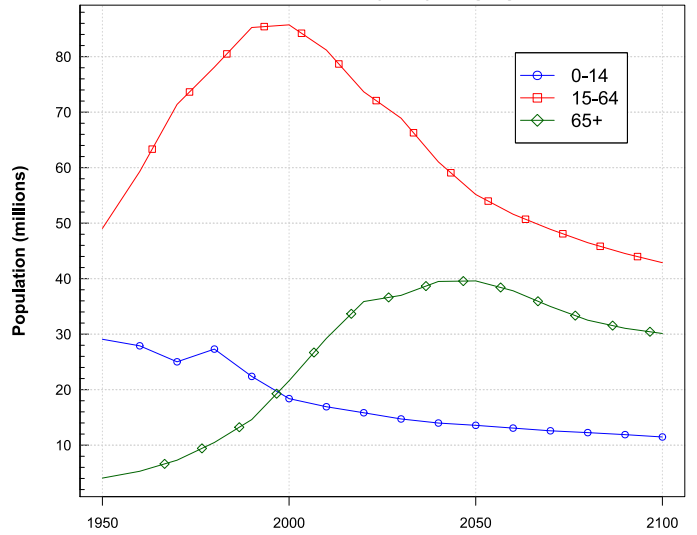
The dotted line indicates the excess male or female population in certain age groups. The data are in thousands or millions.

# Japan

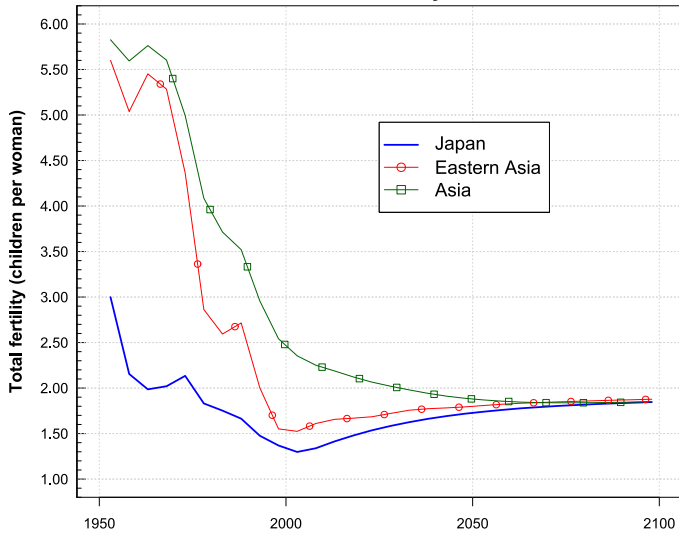
**Total Population by variant**



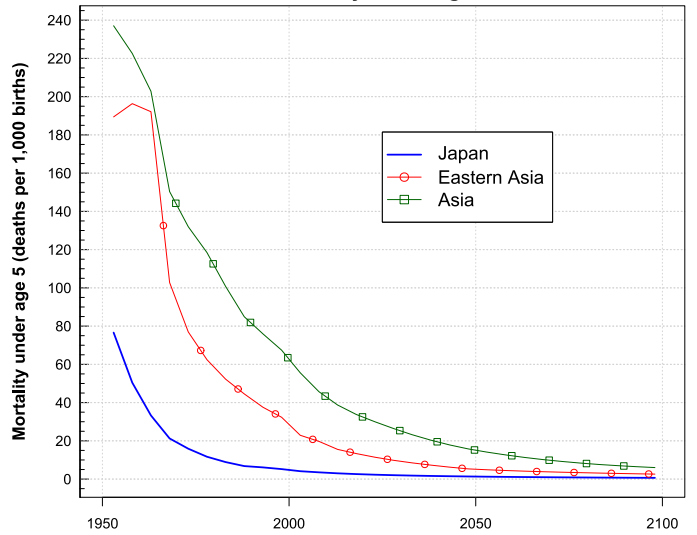
**Total Population by major age groups**



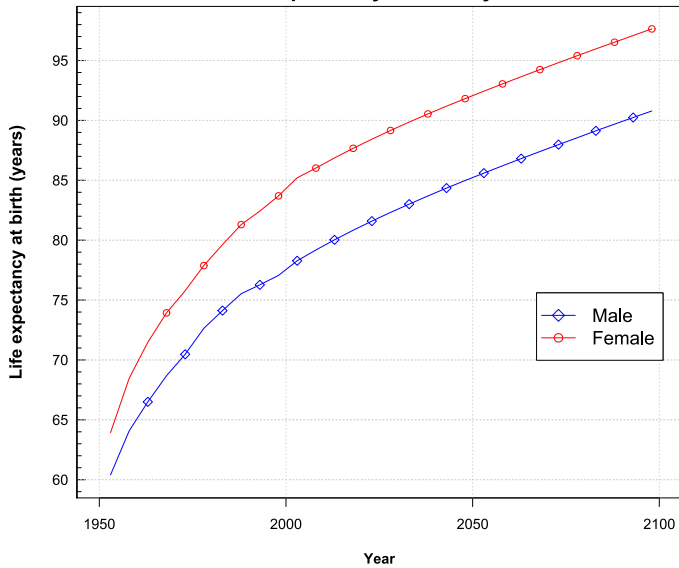
**Total fertility**



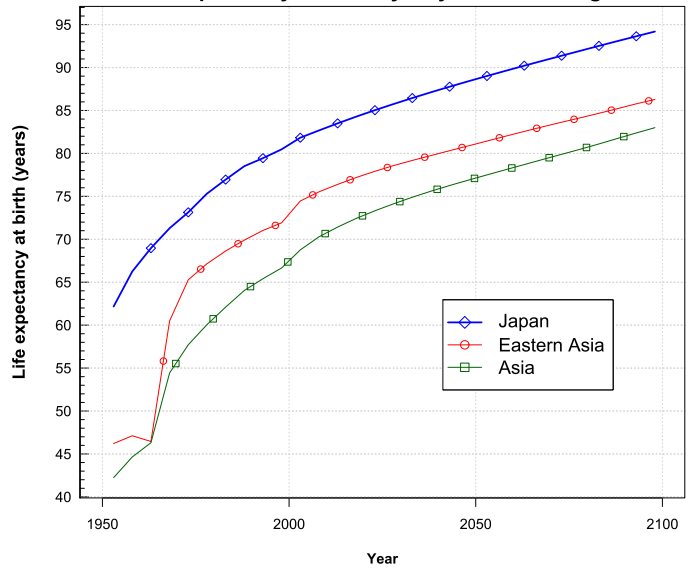
**Mortality under age 5**



**Life expectancy at birth by sex**



**Life expectancy at birth by major area and region**



# Japan

	1950	1970	1990	2000	2005	2010	2015	2020	2030	2050	2075	2100
<b>Total Population</b>												
Total population (thousands) .....	82 199	103 708	122 249	125 715	126 979	127 353	126 818	125 382	120 625	108 329	93 653	84 471
Population density (persons per square km) .....	218	274	324	333	336	337	336	332	319	287	248	224
Median age (years) .....	22.3	28.9	37.4	41.4	43.0	44.9	46.5	48.3	51.6	53.4	52.3	51.8
<b>Dependency ratios (per 100)</b>												
Total dependency ratio (a) .....	67.6	45.3	43.4	46.6	50.7	56.9	64.8	70.2	75.0	96.4	96.3	97.0
Child dependency ratio (b) .....	59.3	35.0	26.3	21.4	20.8	20.8	21.2	21.5	21.4	24.6	26.0	26.8
Old-age dependency ratio (c) .....	8.3	10.2	17.1	25.2	29.9	36.0	43.6	48.7	53.7	71.8	70.3	70.3
	1950-1955	1965-1970	1985-1990	1995-2000	2000-2005	2005-2010	2010-2015	2015-2020	2025-2030	2045-2050	2070-2075	2095-2100
<b>Rates of population change</b>												
Annual rate of population change (percentage) .....	1.5	1.3	0.4	0.2	0.2	0.1	-0.1	-0.2	-0.4	-0.6	-0.6	-0.3
Rate of natural increase (per 1,000 population) .....	14.4	10.9	4.8	1.9	1.0	-0.1	-1.4	-2.7	-4.7	-6.0	-6.2	-3.4
Population doubling time (years) (d) .....	48	55	—	—	—	—	—	—	—	—	—	—
<b>Mortality</b>												
Crude death rate per 1,000 population .....	9.4	6.9	6.5	7.5	7.9	8.8	9.8	10.7	12.5	14.1	14.8	12.2
Infant mortality rate (Iq0) per 1,000 live births .....	50	16	5	4	3	3	2	2	2	1	1	0
Under-five mortality (5q0) per 1,000 live births .....	77	21	7	5	4	4	3	3	2	1	1	1
Adult mortality (45q15) per 1,000 (e) .....	247	145	87	75	71	66	61	57	48	36	24	16
Life expectancy at birth (years) .....	62.2	71.3	78.5	80.5	81.8	82.7	83.5	84.3	85.8	88.4	91.4	94.2
Male life expectancy at birth (years) .....	60.4	68.7	75.5	77.1	78.3	79.2	80.0	80.8	82.3	85.0	88.0	90.8
Female life expectancy at birth (years) .....	63.9	73.9	81.3	83.7	85.2	86.0	86.9	87.7	89.2	91.8	94.8	97.6
Life expectancy at age 15 (years) .....	53.0	58.1	64.2	66.0	67.3	68.0	68.8	69.6	71.0	73.6	76.5	79.3
Life expectancy at age 65 (years) .....	12.5	13.8	18.0	19.6	20.7	21.3	21.9	22.5	23.5	25.6	28.0	30.4
<b>Fertility</b>												
Crude birth rate per 1,000 population .....	23.8	17.8	11.2	9.5	8.9	8.7	8.4	8.1	7.8	8.1	8.6	8.8
Total fertility (children per woman) .....	3.00	2.02	1.66	1.37	1.30	1.34	1.41	1.48	1.58	1.72	1.80	1.85
Sex ratio at birth (males per 100 females) .....	106	106	106	106	106	106	106	106	106	106	106	106
Net reproduction rate (f) .....	1.28	0.95	0.80	0.66	0.63	0.65	0.68	0.71	0.77	0.83	0.88	0.90
Mean age childbearing (years) .....	29.4	27.8	28.5	29.5	29.7	30.2	30.7	31.0	31.5	31.9	32.1	32.1
<b>Births and deaths</b>												
Number of births (thousands) .....	10 146	8 962	6 793	5 916	5 645	5 525	5 334	5 085	4 732	4 444	4 083	3 764
Number of deaths (thousands) .....	4 011	3 475	3 905	4 702	5 003	5 596	6 218	6 772	7 613	7 724	7 019	5 210
Births minus deaths (thousands) .....	6 136	5 487	2 889	1 214	642	- 72	- 885	- 1 686	- 2 882	- 3 279	- 2 936	- 1 446
<b>International migration</b>												
Net number of migrants (thousands) .....	55	878	- 628	17	622	446	350	250	250	250	125	0
Net migration rate (per 1,000) .....	0.1	1.8	-1.0	0.0	1.0	0.7	0.6	0.4	0.4	0.5	0.3	0.0

- a The total dependency ratio is the ratio of the population aged 0-14 and that aged 65+ to the population aged 15-64. They are presented as number of dependants per 100 persons of working age (15-64).
- b The child dependency ratio is the ratio of the population aged 0-14 to the population aged 15-64. They are presented as number of dependants per 100 persons of working age (15-64).
- c The old-age dependency ratio is the ratio of the population aged 65 years or over to the population aged 15-64. They are presented as number of dependants per 100 persons of working age (15-64).
- d The population doubling time corresponds to the number of years required for the total population to double in size if the annual rate of population change would remain constant. Doubling time is computed only for fast growing populations with growth rates exceeding 0.5 per cent.
- e Adult mortality is expressed as deaths under age 60 per 1,000 alive at age 15 and represents the probability of dying between age 15 and age 60 (45q15).
- f The net reproduction rate is expressed as number of daughters per woman and represents the average number of daughters a hypothetical cohort of women would have at the end of their reproductive period if they were subject during their whole lives to the fertility rates and the mortality rates of a given period.

## Japan

**Total population (2011):** Estimated to be consistent with the 2010 census, and with estimates of the subsequent trends in fertility, mortality and international migration.

**Total fertility:** Based on official estimates of age-specific fertility rates through 2009.

**Infant and child mortality:** Based on official estimates of life tables through 2009.

**Life expectancy at birth:** Based on official estimates of life tables through 2009.

**International migration:** Based on estimates of net international migration derived as the difference between overall population growth and natural increase through 2010.